



OPTIMA PARTITIONING SYSTEMS



OPTIMA - exclusive toilet and shower partitioning systems

Recommended applications for building types:

| prestige projects | office buildings | hotels | restaurants | hospitals |

- Pedestal mounted for ease of cleaning
- Uniquely designed adjustable foot assembly
- Registered design - patent pending
- Rebated doors for maximum privacy
- 13mm Solid Compact Laminate panels and doors
- Aluminium Components: wall channel, headrail, corner posts are all natural anodized clear finish
- Designer Style Hardware

Gapless System for Maximum Privacy



Coat Hook
Non-marking rubber tipped



Spring Hinges
Lift off for emergency access
Hold open or closed (3 per door)



Rebated Doors
For maximum privacy



Indicator
Uses red/green occupancy status



Uniquely Designed
Adjustable Foot Assembly



Latchset
Unique intergrated door bumper

System Height: 2000mm high
Overall Depth: 1500mm - 1800mm
Floor Clearance: 150mm



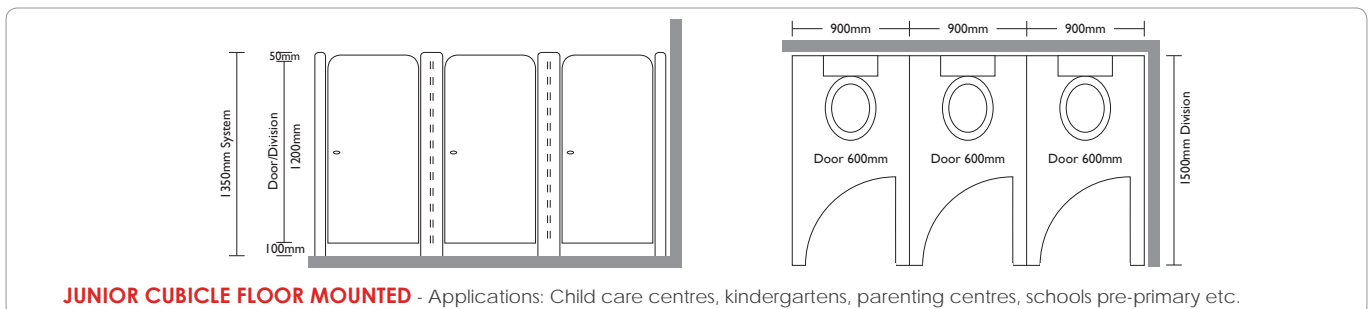
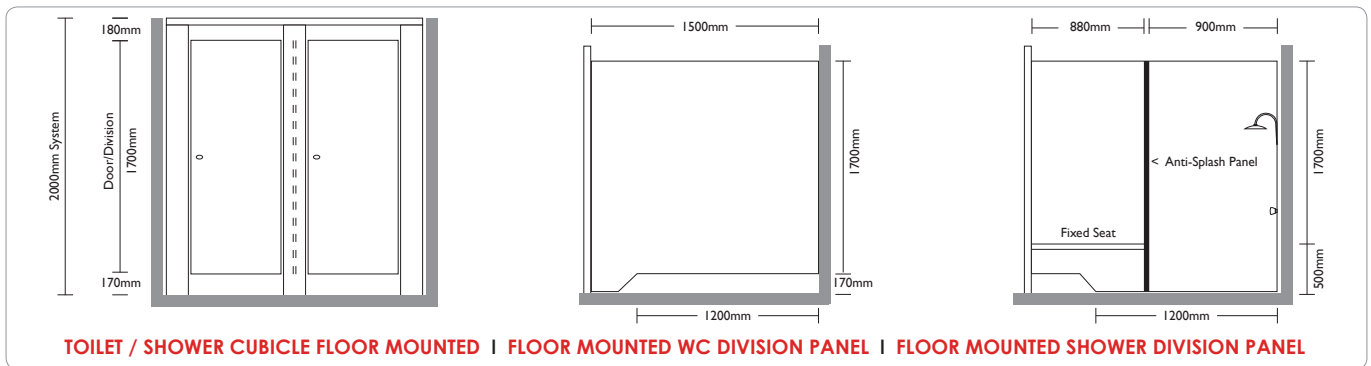
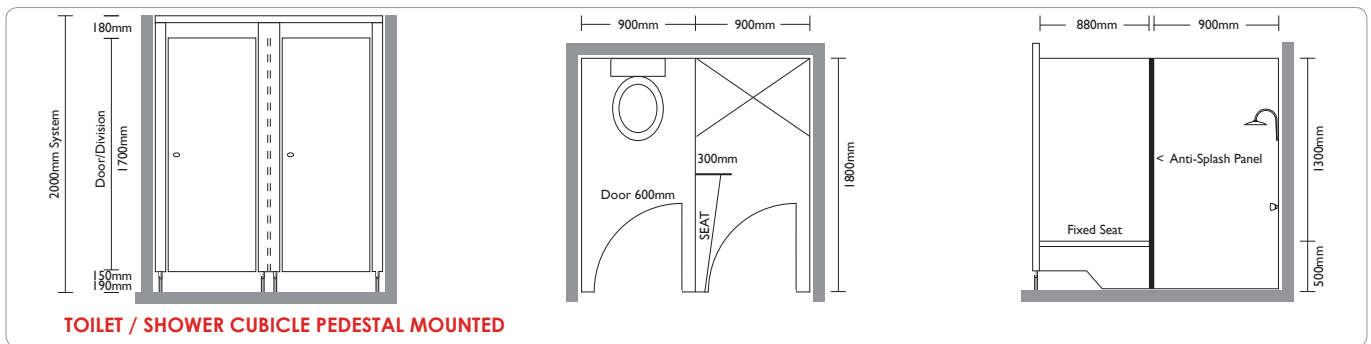
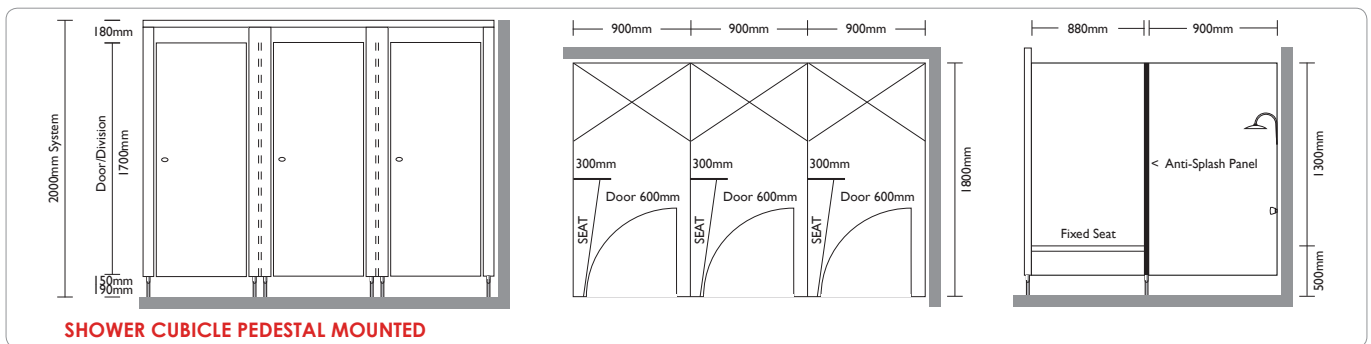
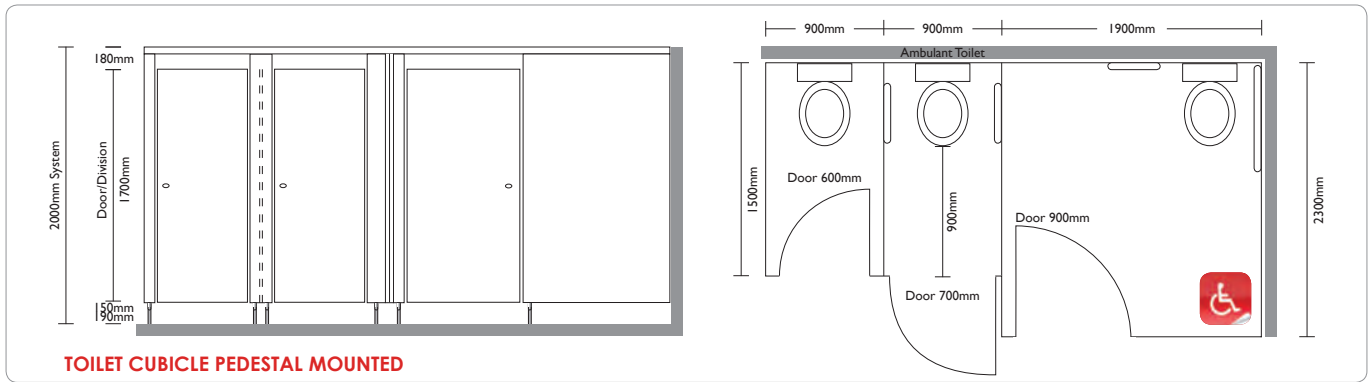
Call 1300 558 518

Rynat Australia Pty Ltd

Trading Entity ABN 26 881 739 757

(As Trustee for the GV & LM Paramor Family Discretionary Trust, trading as Rynat Industries Australia)

Head Office: 20 Murray Road South, Welshpool WA 6106
Postal Address: Perth Office: PO Box 600 Willetton, WA 6955
Melbourne Office: PO Box 240, Prahran VIC 3181
Email Address: info@rynat.com Fax: +61 8 9258 6270



PRODUCT SPECIFICATIONS:	OPTIMA	SPECTRUM	OMEGA	TRIMLINE	ENDURA A	ENDURA B	DATUM	JUNIOR
SYSTEM HEIGHT Overall height from floor to top of headrail	2000mm	2000mm	2000mm	2000mm	2000mm	Floor to Ceiling	Floor to Ceiling	1350mm
FRONTAL PANELS Aluminium Channel screw fixed to the back of the frontal panel and then screw fixed to the division panel	1850mm H x 200mm W (min)	1830mm H x 200mm W (min)	1830mm H x 200mm W (min)	2000mm H x 200mm W (min)	2000mm H x 200mm W (min)	Floor to Ceiling x 200mm W (min)	1800mm H x 200mm W (min)	1350mm H x 200mm W (min)
END NIB PANELS Aluminium Channel to be screw fixed to the wall and then fixed to the end nib panel	1850mm H x 80mm W (min)	1830mm H x 80mm W (min)	1830mm H x 80mm W (min)	2000mm H x 80mm W (min)	2000mm H x 80mm W (min)	Floor to Ceiling x 80mm W (min)	Floor to Ceiling x 80mm W (min)	1350mm H x 80mm W (min)
WC DIVISION PANELS Aluminium Channel to be screw fixed to the rear of the wall and the back of the frontal panel	1700mm H x 1500mm W	1700mm H x 1500mm W	1700mm H x 1500mm W	1700mm H x 1500mm W	1700mm H x 1500mm W	1700mm H x 1500mm W	1650mm H x 1500mm W	1200mm H x 1500mm W
SHOWER DIVISION PANELS Aluminium Channel screw fixed to the rear of the wall and the back of the frontal panel	1700mm H x 1800mm W	1700mm H x 1800mm W	1700mm H x 1800mm W	1700mm H x 1800mm W	1700mm H x 1800mm W	1700mm H x 1800mm W	1650mm H x 1800mm W	N/A
DOORS Hinged to either the end nib panel or frontal panel. Doors square edged cut with 2.5mm radius corners	STD: 1700H x 600W ACCESS: 1700H x 900W AMBULANT: 1700H x 700W	STD: 1700H x 600W ACCESS: 1700H x 900W AMBULANT: 1700H x 700W	STD: 1700H x 600W ACCESS: 1700H x 900W AMBULANT: 1700H x 700W	STD: 1700H x 600W ACCESS: 1700H x 900W AMBULANT: 1700H x 700W	STD: 1700H x 600W ACCESS: 1700H x 900W AMBULANT: 1700H x 700W	STD: 1700H x 600W ACCESS: 1700H x 900W AMBULANT: 1700H x 700W	STD: 1650H x 600W ACCESS: 1650H x 900W AMBULANT: 1700H x 700W	1200H x 600W
FOOT ASSEMBLY - PEDESTAL MOUNTED Frontal Panel = Qty 2 End Panel exceeding 100mm = Qty 1 Division Panel exceeding 1800mm = Qty 1 Corner End Division = Qty 1	150mm H	170mm H	170mm H	N/A	Optional 170mm H	Optional 170mm H	N/A	N/A
FLOOR MOUNTED Frontal Panels Fixed directly to the floor	N/A	N/A	N/A	✓	Optional	Optional	✓ (Stainless Steel Plinth)	✓
SCREW FIX HARDWARE - SPRING Oval Indicator, Latchset/Staple, Coat Hook Safety Lift Off Spring Hinges x 3 Concealed Fixing Plates	✓	✓	N/A	✓	N/A	N/A	N/A	N/A
SCREW FIX HARDWARE - GRAVITY Rounded Indicator, Latchset/Staple, Coat Hook Safety Lift Off Gravity Hinges x 3 Concealed Fixing Plates	N/A	N/A	✓	N/A	N/A	N/A	✓	N/A
BOLT THROUGH HARDWARE Oval Indicator, Latchset/Staple, Coat Hook Safety Lift Off Spring Hinges x 2 Tamper Resistant Fixings	N/A	N/A	N/A	N/A	✓	✓	N/A	✓
REBATED DOORS For Maximum Privacy	✓	✓	N/A	N/A	N/A	N/A	N/A	N/A
ALUMINIUM OVERHEAD BRACED (Profile)	✓	✓	✓	✓	✓	N/A	N/A	N/A
PRODUCT LIMITED WARRANTY	10 Years	10 Years	10 Years	10 Years	10 Years	10 Years	10 Years	10 Years

Rynat Australia Pty Ltd

Trading Entity ABN 26 881 739 757

(As Trustee for the GV & LM Paramor Family Discretionary Trust, trading as Rynat Industries Australia)

Call us on 1300 558 518

Australia Wide

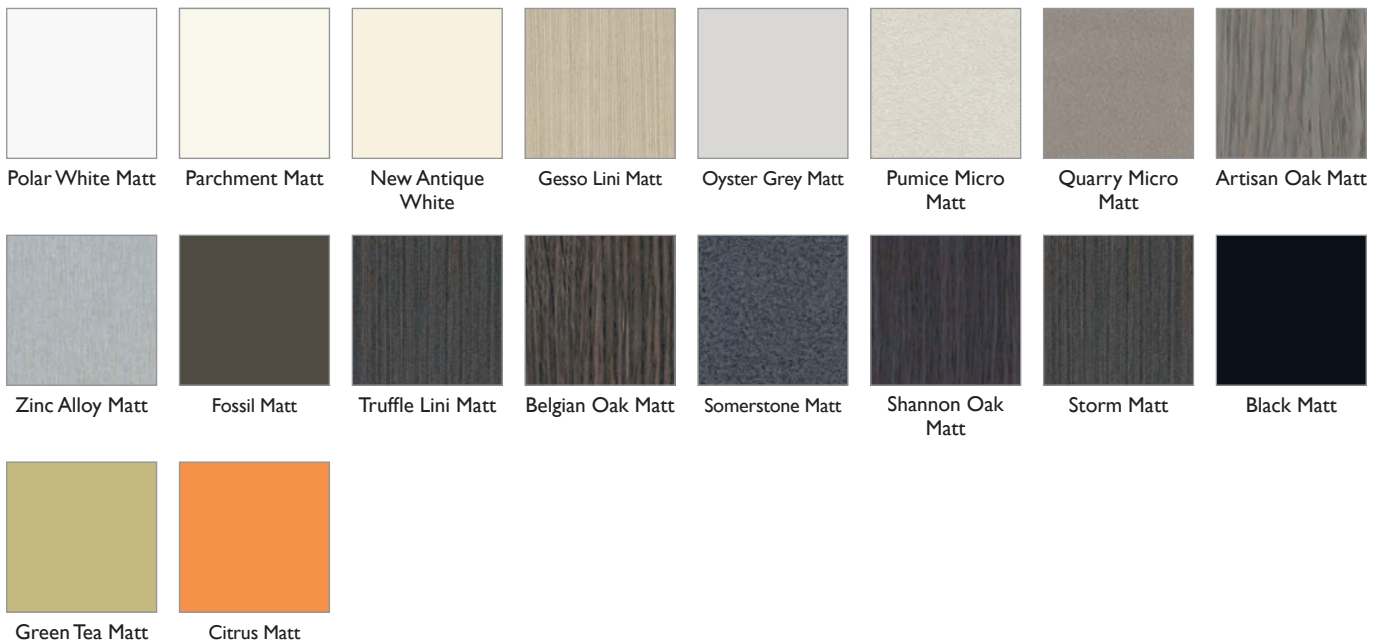
Head Office: 20 Murray Road South, Welshpool WA 6106
Postal Address: Perth Office: PO Box 600 Willeton, WA 6955
 Melbourne Office: PO Box 240, Prahran VIC 3181
Email Address: info@rynat.com Fax: +61 8 9258 6270

or visit our website at
www.rynat.com

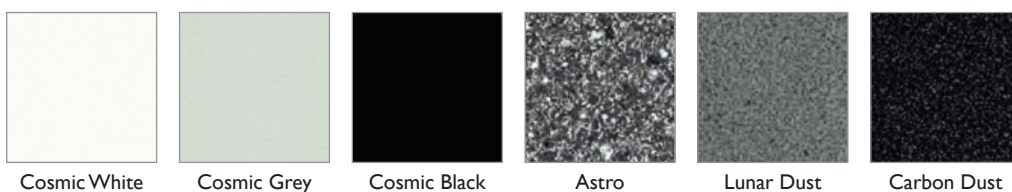
POLYREY COMPACT COLOUR RANGE (*not suitable for division panels exceeding 1500mm depth)



POLYTEC COMPACT & MDF COLOUR RANGE



LAMINEX XR COMPACT COLOUR RANGE



LAMINEX COMPACT & MDF COLOUR RANGE



green building council australia
MEMBER

Rynat Products are engineered to provide maximum strength and durability which lowers maintenance or replacement costs offering long product life span and low panel emissions for better indoor air quality hence substantially contributing towards your **Green Star Credit Rating Points**.

Designed and manufactured by



Rynat Industries
Australia

For the latest updated product
information visit our website

www.rynat.com

Call us on 1300 558 518 Australia Wide

Rynat Australia Pty Ltd

Trading Entity ABN 26 881 739 757

(As Trustee for the GV & LM Paramor Family Discretionary Trust, trading as Rynat Industries Australia)

Head Office:	20 Murray Road South, Welshpool WA 6106		
Postal Address:	Perth Office:	PO Box 600 Willeton, WA 6955	
	Melbourne Office:	PO Box 240, Prahran VIC 3181	
Email Address:	info@rynat.com	Fax:	+61 8 9258 6270